

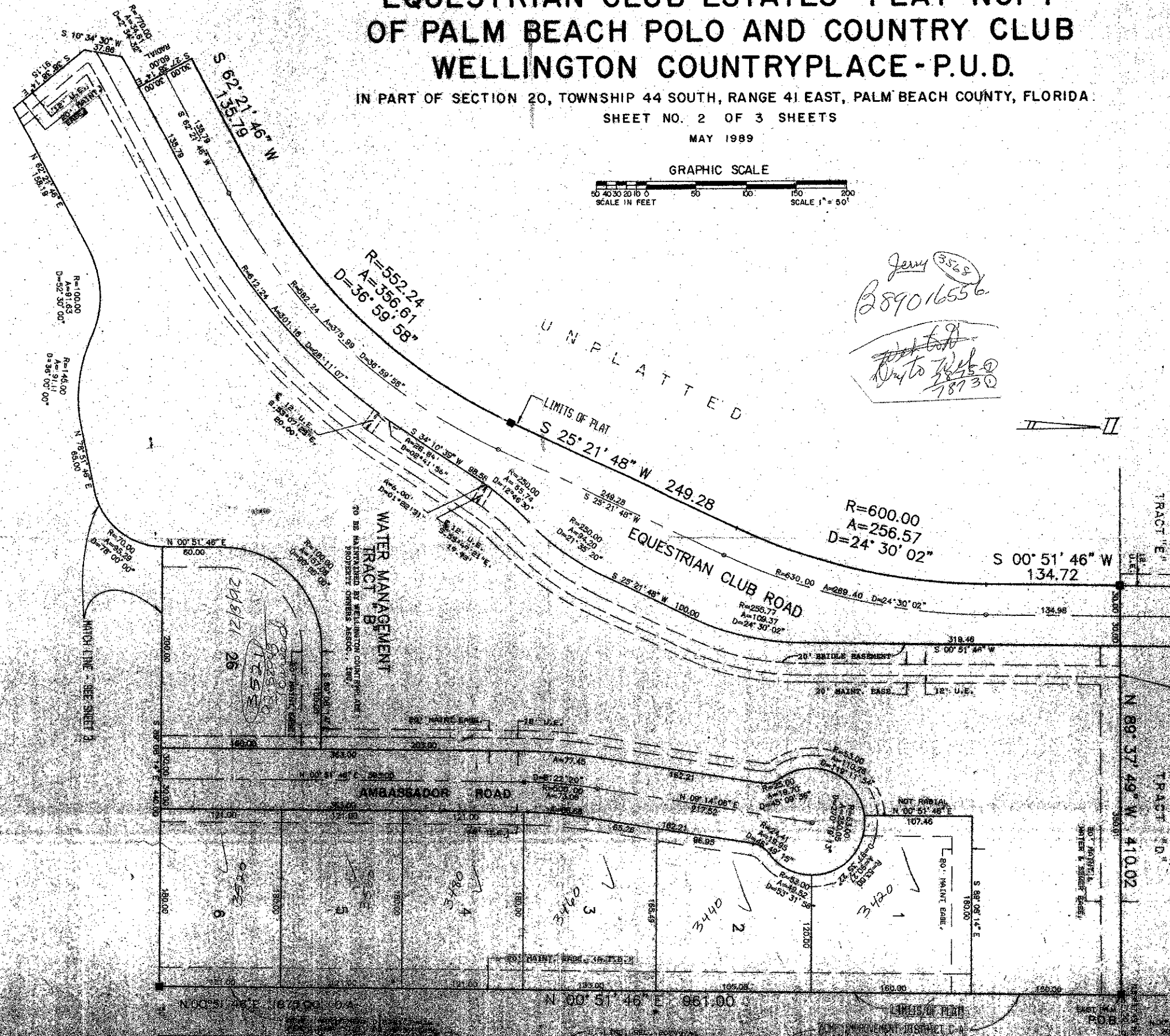
EQUESTRIAN CLUB ESTATES - PLAT NO. 1 OF PALM BEACH POLO AND COUNTRY CLUB WELLINGTON COUNTRYPLACE - P.U.D.

IN PART OF SECTION 20, TOWNSHIP 44 SOUTH, RANGE 41 EAST, PALM BEACH COUNTY, FLORIDA

SHEET NO. 2 OF 3 SHEETS

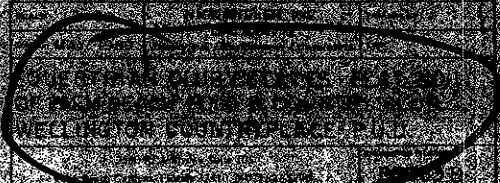
MAY 1989

GRAPHIC SCALE



PALM BEACH POLO EQUESTRIAN CLUB PLAT NO. 3
OF WELLINGTON COUNTRYPLACE, P.U.D. - PB 61, PGS 14 & 15

MADE BY 67
DESIGNED BY [Signature]
0333-006



PLAT NO. 188
EQUESTRIAN CLUB ESTATES
WELLINGTON COUNTRYPLACE, P.U.D.
PAGE 188
DATE: MAY 1989
BY: [Signature]

64/188